

Geometry

Name: _____

9.6 Families of Right Triangles

The following problems use the right triangle families of (3,4,5), (5,12,13), (7,24,25), (8,15,17), and (9,40,41). To which family does the triangle belong? Then, find the missing side.

A. 3-4-5

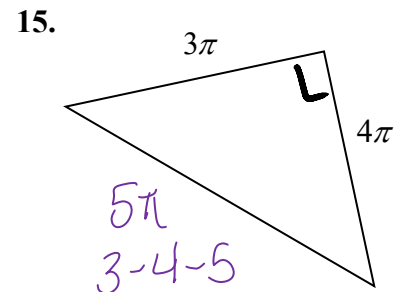
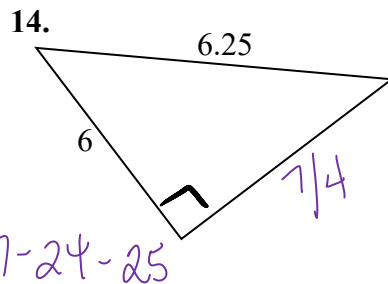
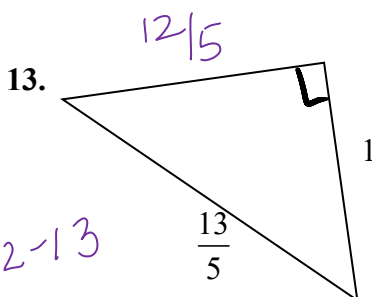
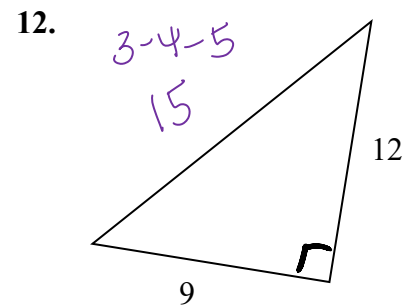
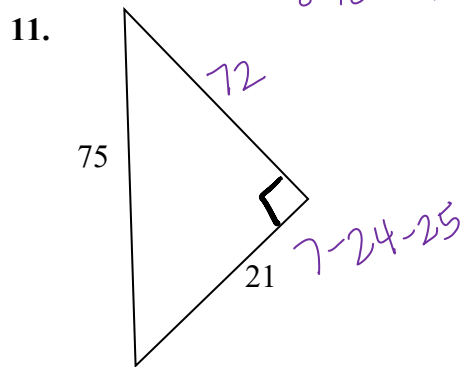
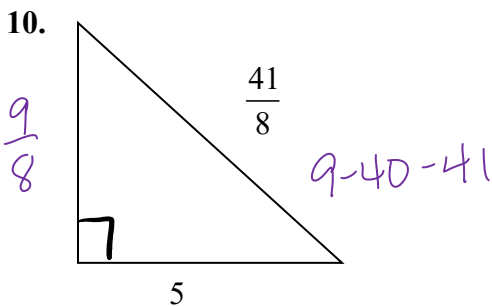
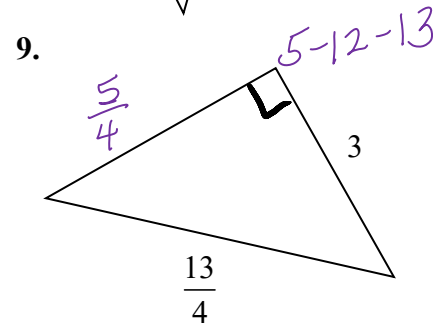
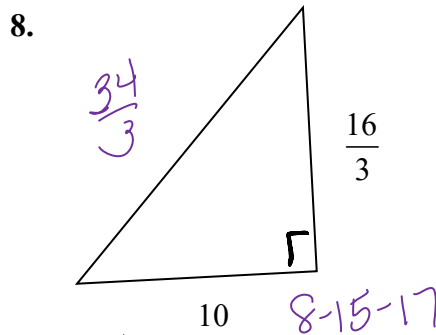
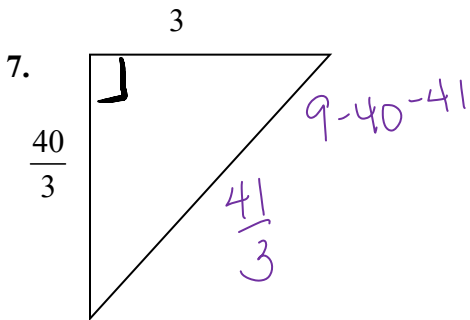
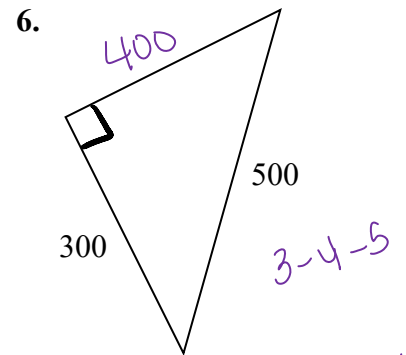
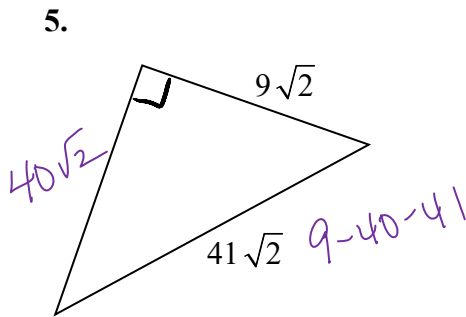
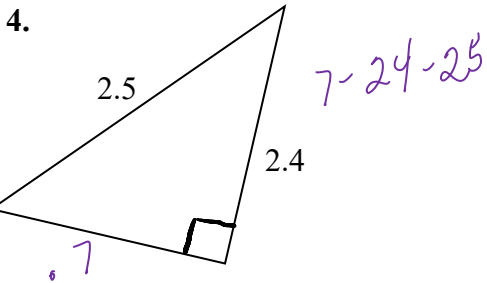
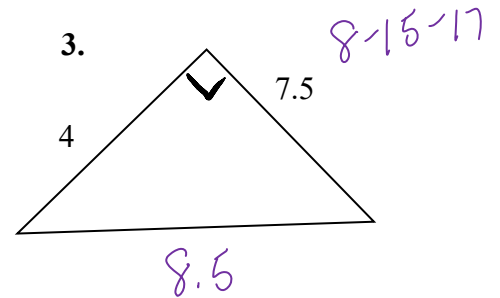
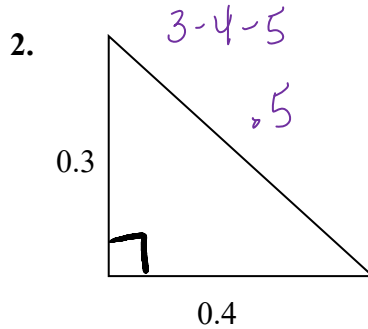
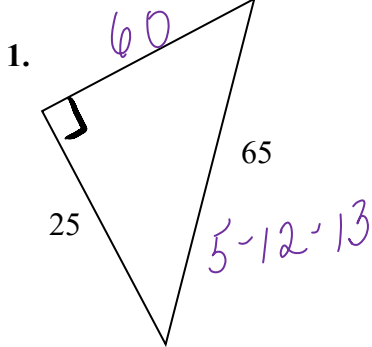
B. 5-12-13

C. 7-24-25

D. 8-15-17

E. 9-40-41

F. None



A. 3-4-5

B. 5-12-13

C. 7-24-25

D. 8-15-17

E. 9-40-41

F. None

