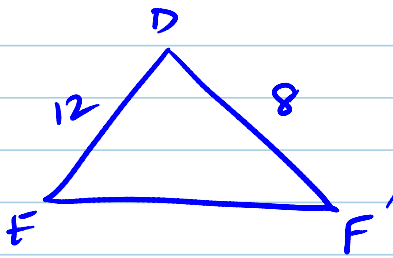
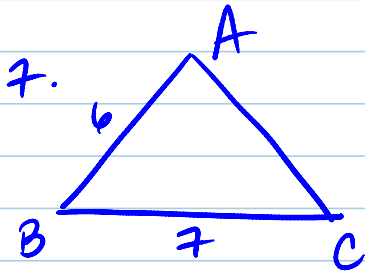


8.4 Continued

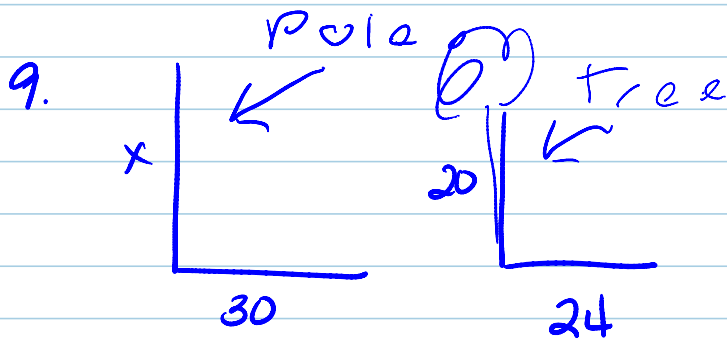
Friday, January 23, 2009
9:40 AM

pg. 347 #7, 9, 11, 16, 17, 19



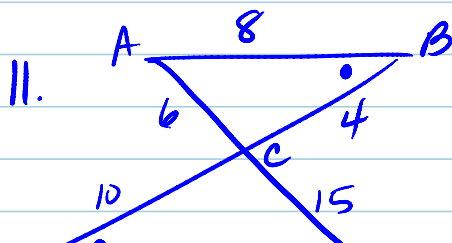
$$\frac{6}{12} = \frac{AC}{8} \Rightarrow AC = 4$$

$$\frac{6}{12} = \frac{7}{EF} \Rightarrow EF = 14$$



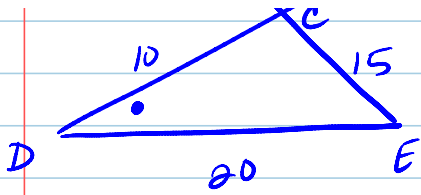
$$\frac{x}{20} = \frac{30}{24}$$

$$x = 25 \text{ feet high}$$



$$\frac{6}{15} \stackrel{?}{=} \frac{4}{10} \stackrel{?}{=} \frac{8}{20}$$

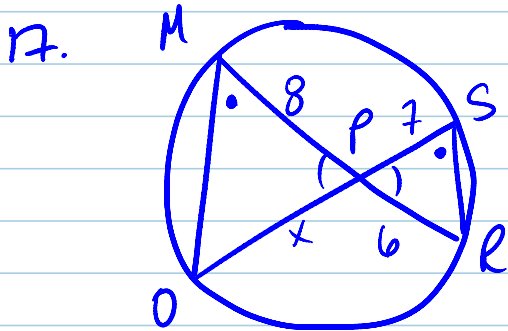
$$\frac{2}{5} = \frac{2}{5} = \frac{2}{5} \checkmark \text{ SSS} \sim$$



$$\frac{2}{5} = \frac{2}{5} = \frac{2}{5} \quad \checkmark \quad SSS \sim$$

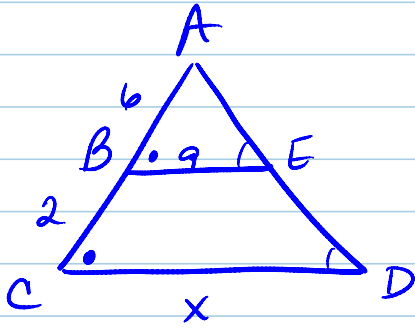
$\angle B \cong \angle D$ and these are alt. interior angles \Rightarrow

$$\overline{AB} \parallel \overline{DE}$$



$$\frac{8}{7} = \frac{x}{6} \Rightarrow x = \frac{48}{7}$$

19.



$$\frac{6}{8} = \frac{9}{x} \Rightarrow x = 12$$