

b.2 day 2 HW

Thursday, April 3, 2014
12:49 PM

pg. 402 37-43, 63-66

37. F

38. T

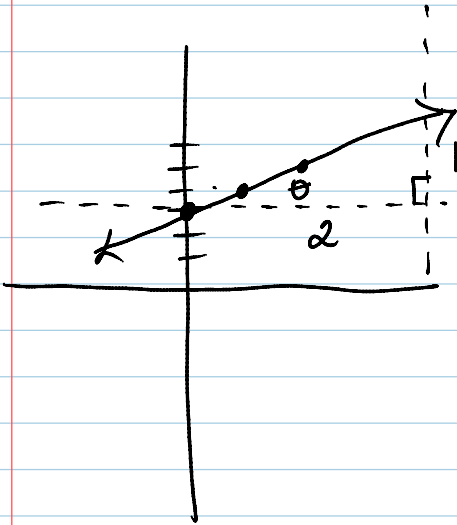
39. F

40. T

41. F

42. T

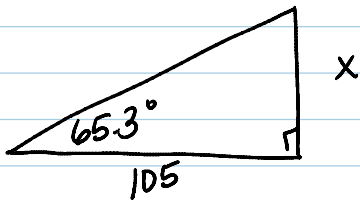
43. $y = \frac{1}{2}x + 3$



$$\tan \theta = \frac{1}{2}$$

$$\theta = 26.6^\circ$$

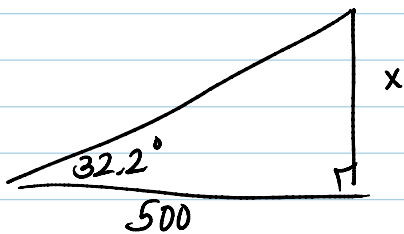
63.



$$\tan 65.3^\circ = \frac{x}{105}$$

$$x = 228 \text{ ft}$$

64.



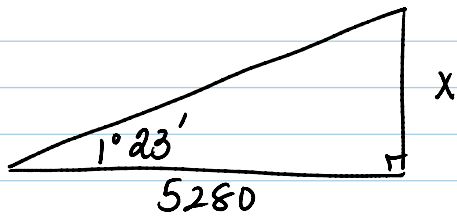
$$\tan 32.2^\circ = \frac{x}{500}$$

$$x = 315 \text{ m}$$

500

$$x = 0.15 \text{ m}$$

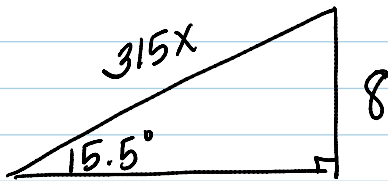
b5.



$$\tan(1^\circ 23') = \frac{x}{5280}$$

$$x = 127.5 \text{ feet}$$

b6.



$$\sin 15.5^\circ = \frac{8}{315x}$$

$$x = 0.095 \text{ hours}$$

$$= 5.7 \text{ minutes}$$

Is this realistic?