

Monday, October 21, 2013  
8:23 AM

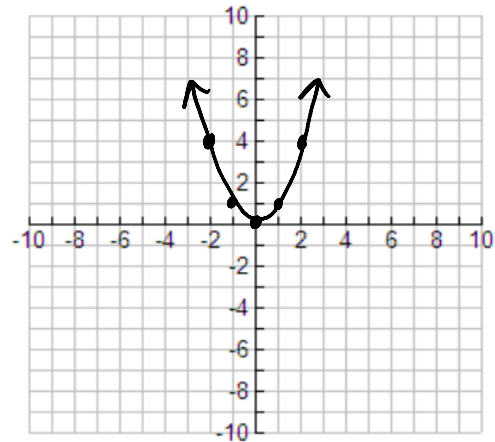
# sect 3.3

## 6 basic functions

### For Transformations

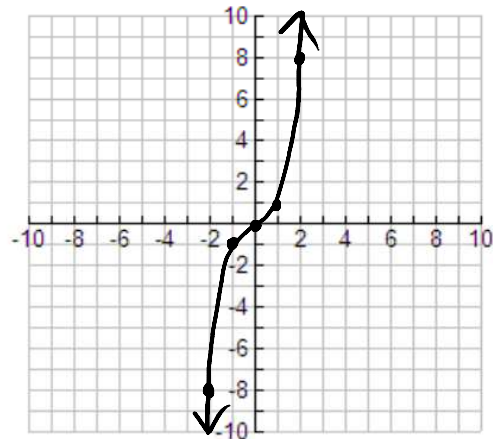
1) The parabola  $y=x^2$

x	f(x)
-2	4
-1	1
0	0
1	1
2	4



2) The cubic  $y=x^3$

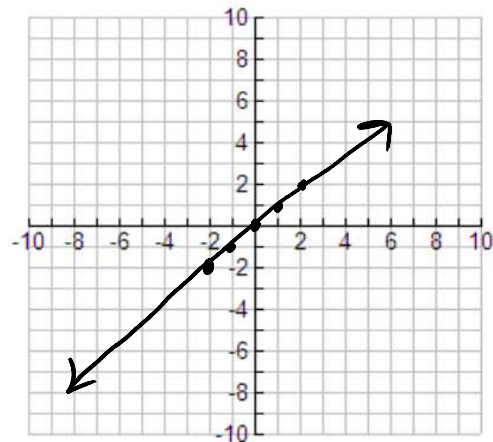
x	f(x)
-2	-8
-1	-1
0	0
1	1
2	8



3) The line  $y=x$

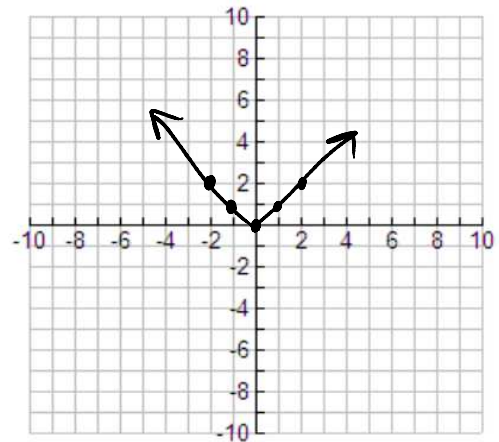
x	f(x)
-2	-2
-1	-1
0	0
1	1
2	2

\*\*Not in book\*\*



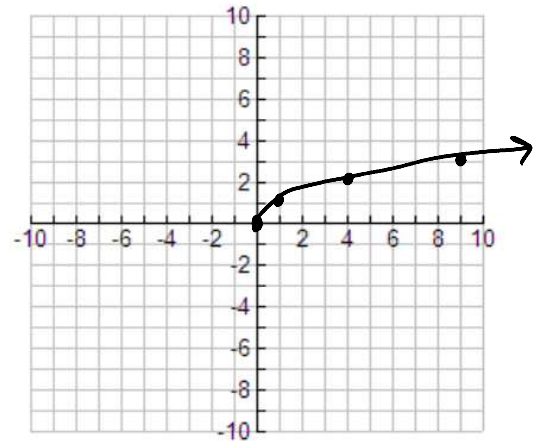
4) The abs value  $y=|x|$

x	f(x)
-2	2
-1	1
0	0
1	1
2	2



5) The square root  $y=\sqrt{x}$

x	f(x)
0	0
1	1
4	2
9	3
16	4



6) The exponential  $y=2^x$

x	f(x)
-2	1/4
-1	1/2
0	1
1	2
2	4

