

10.9 Day 2

Tuesday, March 15, 2011
9:12 AM

pg. 501 #6, 8, 14, 15, 17

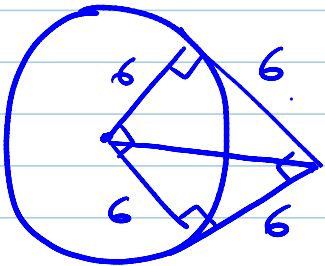
6. a. $\frac{12\pi}{4} = 3\pi$

b. $\text{Sector } AOB = 3\pi + 6 + 6 = 12 + 3\pi$

8. a. 20π mm

b. 72°

14.



$$12 + \frac{3}{4} \cdot 12\pi = 12 + 9\pi$$

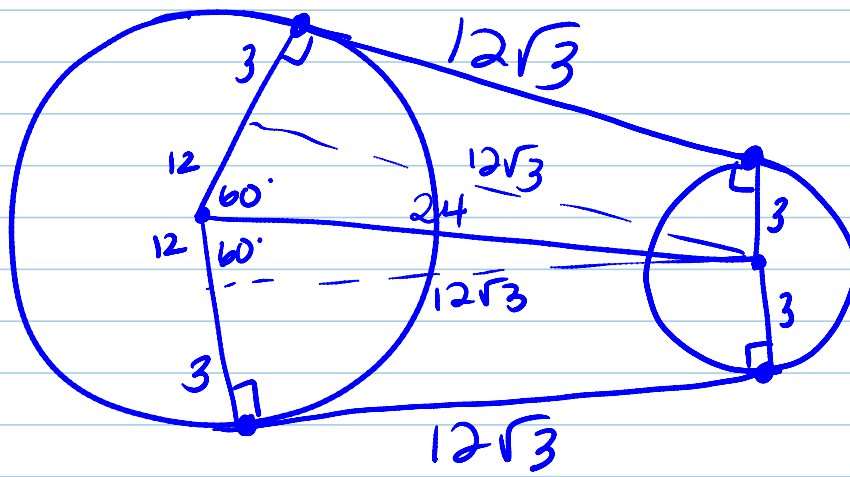
15. $\frac{75}{360} \cdot 24\pi = 5\pi$

Back + forth = 10π

17.

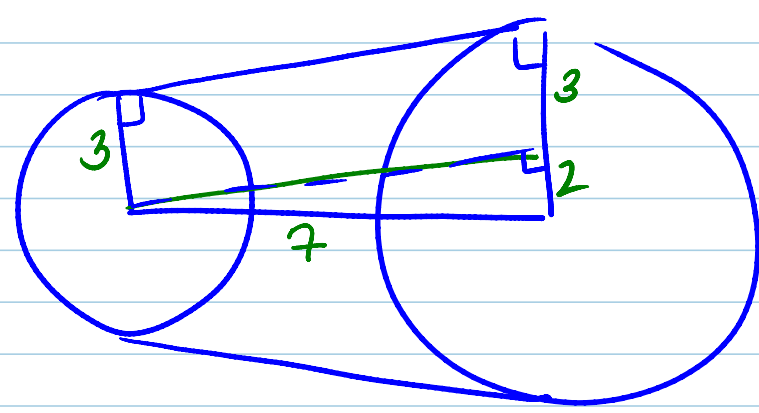


OH MAN!



UH MAN!
30-60-90!

$$\begin{aligned}
 \text{distance} &= \frac{2}{3} \cdot 20\pi + \frac{1}{3} \cdot 6\pi + 24\sqrt{3} \\
 &= 20\pi + 2\pi + 24\sqrt{3} \\
 &= 22\pi + 24\sqrt{3}
 \end{aligned}$$



Extra Credit