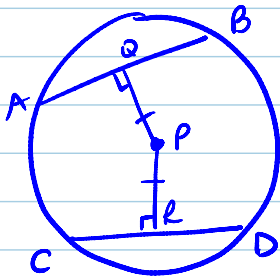


10.2

Monday, March 07, 2011
9:28 AM

pg. 447 #2, 6, 11-13, 15

2.



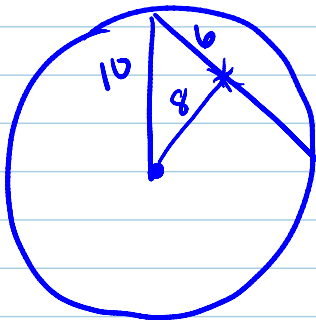
$$6x + 14 = 4 - 4x$$

$$10x = -10$$

$$x = -1$$

$$AB = 6(-1) + 14 = 8$$

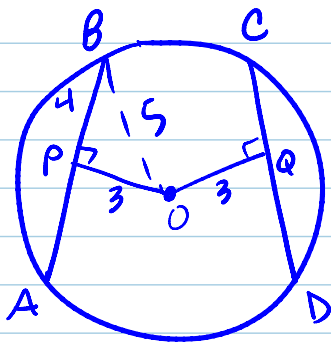
6.



a. 8 cm

b. Circular with a radius of 8

11.



$$2(3x - 17) = 15 - x$$

$$6x - 34 = 15 - x$$

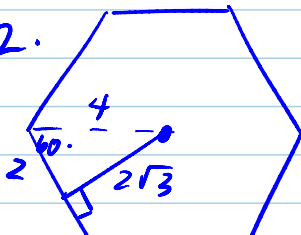
$$7x = 49$$

$$x = 7$$

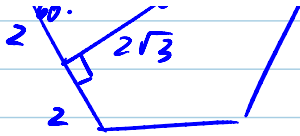
a. $AB = 8$

b. radius = 5

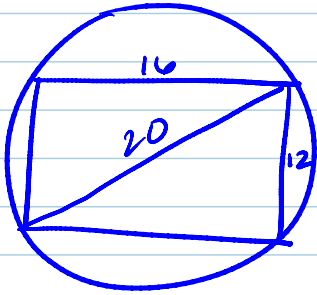
12.



$2\sqrt{3}$ units away

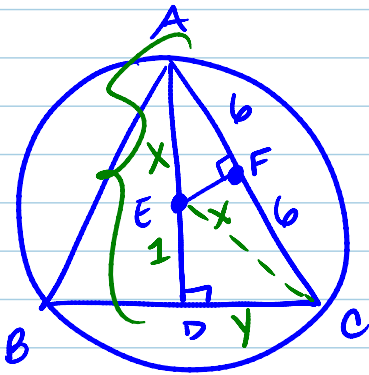


13.



radius = 10

15.



a. radius = 8

b. perimeter = $24 + 6\sqrt{7}$

$$1^2 + y^2 = x^2$$

$$1 + y^2 = x^2$$

$$(x+1)^2 + y^2 = 144$$

$$x^2 + 2x + 1 + y^2 = 144$$

$$x^2 + 2x + x^2 = 144$$

$$2x^2 + 2x - 144 = 0$$

$$2(x^2 + x - 72) = 0$$

$$2(x+9)(x-8) = 0$$

$$x = 8, -9$$

$$1 + y^2 = 64$$

$$y^2 = 63$$

$$y = \sqrt{63}$$

$$= 3\sqrt{7}$$